

## 7 - ACCESSORI

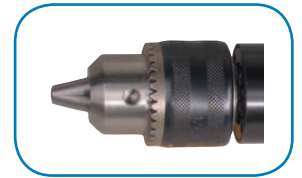
## 7 - ACCESSORIES

## 7 - ZUBEHÖR

### 7.1 - ACCESSORI PER MOTORI DI IMPIEGO GENERALE

### 7.1 - ACCESSORIES FOR GENERAL USE MOTORS

### 7.1 - ZUBEHÖR FÜR DEN ALLGEMEINEN GEBRAUCH



#### MANDRINI A CREMAGLIERA

#### RACK CHUCK

#### ZAHNKRANZBOHRFUTTER

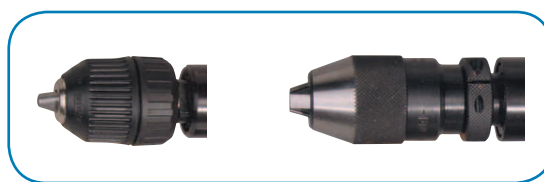
| Capacità $\varnothing$ mm<br>Capacity $\varnothing$ mm<br>Spannweite $\varnothing$ mm | Attacco<br>Connection<br>Anschluss | Codice<br>Code<br>Bestellnr. |
|---|------------------------------------|------------------------------|
| 0-4   | B-10                               | 3715411                      |
| 0-6   | B-10                               | 3715611                      |
| 0-6   | B-12                               | 3715612                      |
| 0-6   | 3/8" x 24                          | 3715614                      |
| 0-8   | B-10                               | 3715811                      |
| 0-8   | B-12                               | 3715812                      |
| 0-8   | 3/8" x 24                          | 3715814                      |
| 0-8   | 1/2" x 20                          | 3715815                      |
| 0-10  | B-12                               | 3716011                      |
| 0-10  | 3/8" x 24                          | 3716014                      |
| 0-10  | 1/2" x 20 leggero - light - leicht | 3716025                      |
| 0-13  | B-10                               | 3716311                      |
| 0-13  | B-16                               | 3716312                      |
| 0-13  | 3/8" x 24                          | 3716316                      |
| 0-13  | 1/2" x 20                          | 3716317                      |

#### CHIAVI PER MANDRINI A CREMAGLIERA

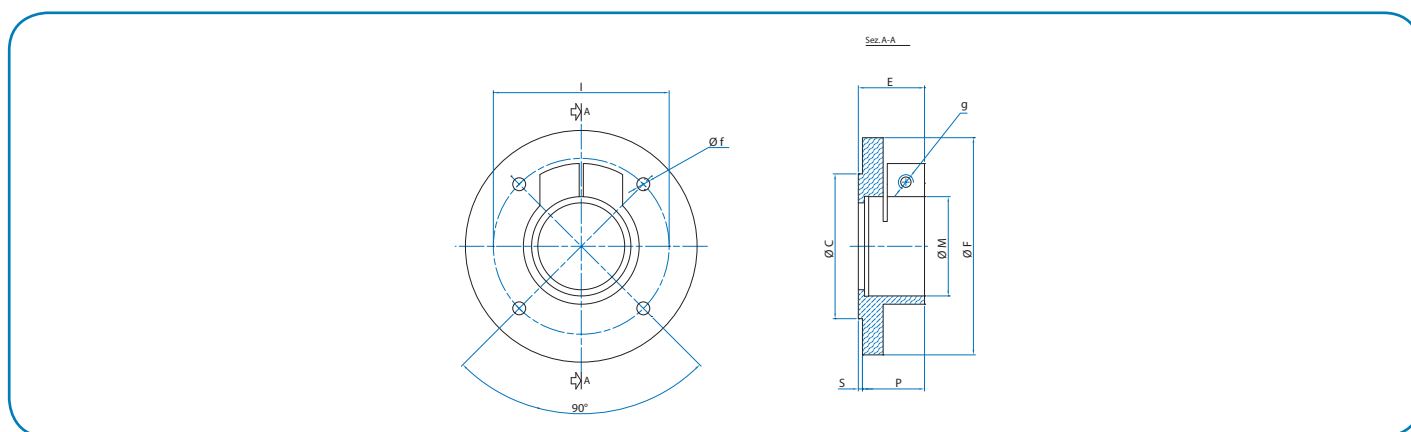
#### RACK CHUCK KEYS

#### SCHLÜSSEL FÜR ZAHNKRANZBOHRFUTTER

| Capacità mandrini $\varnothing$ mm<br>Chuck capacity $\varnothing$ mm<br>Spannweite $\varnothing$ mm | Codice<br>Code<br>Bestellnr. |
|--|------------------------------|
| 0-4  | 3715499                      |
| 0-6  | 3715699                      |
| 0-8  | 3715899                      |
| 0-10   | 3716099                      |
| 0-13   | 3716399                      |

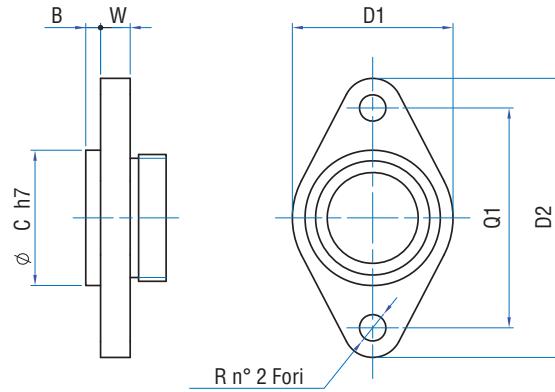
**MANDRINI AUTOSERRANTI  
SELF-CENTRING CHUCKS  
SCHNELLSPANNFUTTER**


| Capacità $\varnothing$ mm<br>Capacity $\varnothing$ mm<br>Spannweite $\varnothing$ mm | Attacco<br>Connection<br>Anschluss                | Codice<br>Code<br>Bestellnr. |
|---|---|------------------------------|
| 0-6   | B-10  | 3710641                      |
| 0-6   | B-12  | 3710642                      |
| 0-6   | 3/8" x 24   | 3710645                      |
| 0-6   | 1/2" x 20   | 3710646                      |
| 0-8   | B-10  | 3710811                      |
| 0-8   | B-12  | 3710842                      |
| 0-8   | 3/8" x 24   | 3710844                      |
| 0-8   | 1/2" x 20 FR                                      | 3710845                      |
| 0-10  | 3/8" x 24 normale - standard - normal             | 3711015                      |
| 0-10  | 3/8" x 24 reversibile - reversible - umsteuerbare | 3711037                      |
| 0-10  | B12   | 3711041                      |
| 0-10  | 3/8" x 24 pneumatico - pneumatic - pneumatisch    | 3711045                      |
| 0-10  | 1/2" x 20 pneumatico - pneumatic - pneumatisch    | 3711046                      |
| 0-13  | 1/2" x 20   | 3711316                      |
| 0-13  | 3/8" x 24   | 3711318                      |
| 0-16  | 1/2" x 20   | 3711616                      |

**FLANGE  
FLANGE  
FLANSCH**


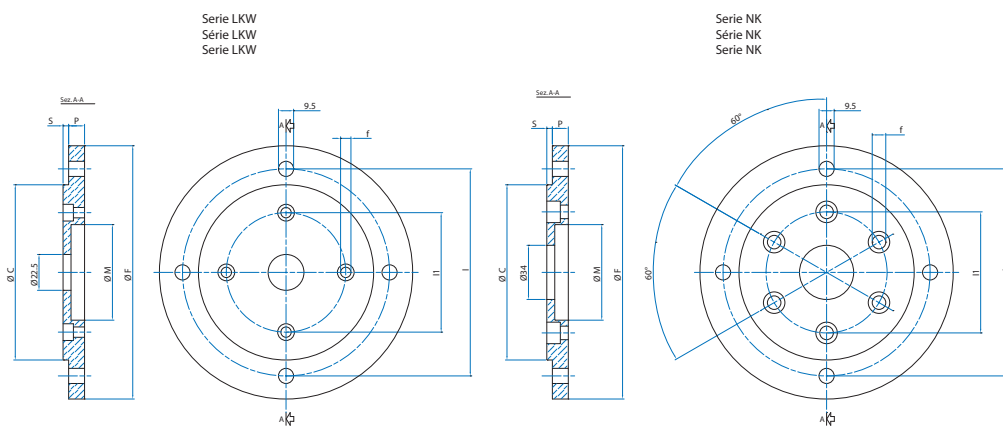
| Serie<br>Series<br>Serie | Codice<br>Code<br>Bestellnr. | f               | g  | C                | E    | F                 | I  | M                | P    | S |
|--------------------------|------------------------------|-----------------|----|------------------|------|-------------------|----|------------------|------|---|
| LCYO                     | 5191030                      | $\varnothing$ 5 | M5 | $\varnothing$ 40 | 18   | $\varnothing$ 60  | 50 | $\varnothing$ 26 | 16   | 2 |
| LFB                      | 5191031                      | $\varnothing$ 5 | M6 | $\varnothing$ 50 | 22,5 | $\varnothing$ 80  | 65 | $\varnothing$ 34 | 20,5 | 2 |
| LGS - SLGS               | 5191032                      | $\varnothing$ 5 | M6 | $\varnothing$ 60 | 26   | $\varnothing$ 90  | 75 | $\varnothing$ 40 | 24   | 2 |
| P - SP - T               | 5191033                      | $\varnothing$ 5 | M8 | $\varnothing$ 70 | 32   | $\varnothing$ 105 | 85 | $\varnothing$ 48 | 29   | 2 |

**FLANGE  
FLANGE  
FLANSCH**

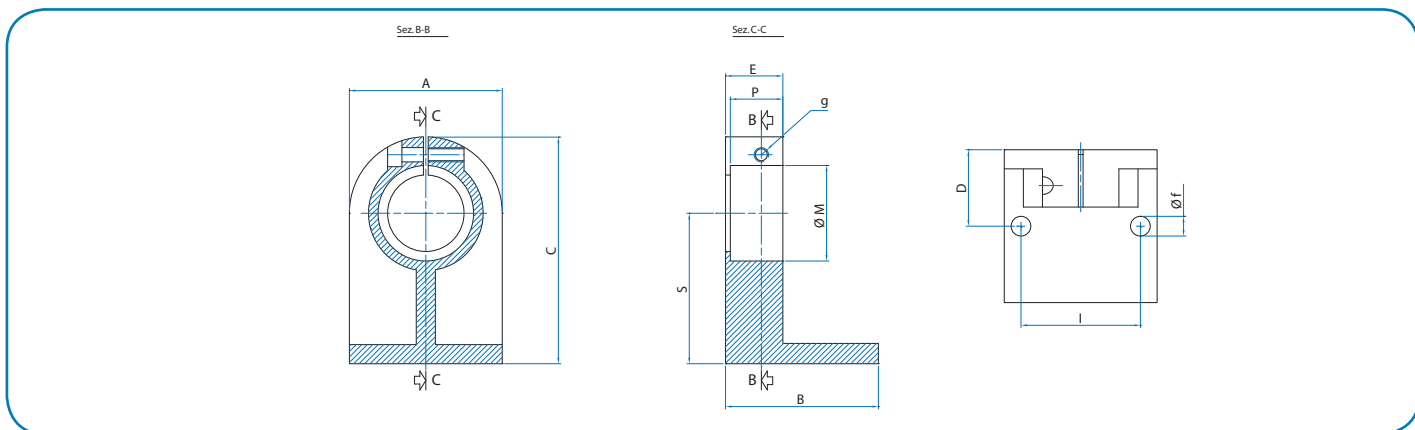


| Codice<br>Code<br>Bestellnr. | Serie<br>Series<br>Serie | B   | C  | D1 | D2 | Q1 | R    | W   |
|------------------------------|--------------------------|-----|----|----|----|----|------|-----|
| 5191036                      | <b>LFB</b>               | 3,5 | 32 | 38 | 66 | 52 | 6,25 | 7   |
| 5191037                      | <b>LFF - LGS - SLGS</b>  | 3,5 | 32 | 44 | 72 | 58 | 6,25 | 7,5 |
| 5190224                      | <b>LGG - P - SP - T</b>  | 2   | 40 | 50 | 90 | 70 | 8,25 | 5   |

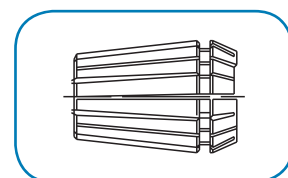
**FLANGIA PER MOTORI SERIE LKW-NK  
FLANGE FOR LKW-NK SERIES MOTORS  
FLANSCH FÜR MOTOREN SERIE LKW-NK**



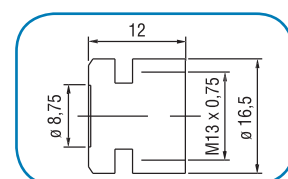
| Serie<br>Series<br>Serie | Codice<br>Code<br>Bestellnr. |
|--------------------------|------------------------------|
| <b>LKW</b>               | 5191015                      |
| <b>NK</b>                | 5191018                      |

**SUPPORTI  
SUPPORT  
HALTER**


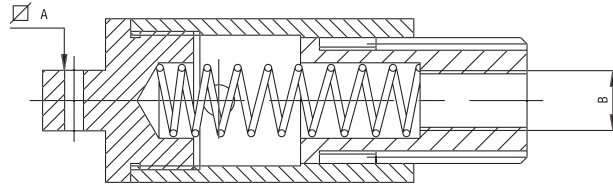
| Serie<br>Series<br>Serie | Codice<br>Code<br>Bestellnr. | f   | g  | A  | B  | C   | D  | E  | I  | M    | P  | S  |
|--------------------------|------------------------------|-----|----|----|----|-----|----|----|----|------|----|----|
| <b>LCYO</b>              | 5133056                      | ∅ 6 | M5 | 48 | 48 | 64  | 24 | 17 | 36 | ∅ 26 | 15 | 40 |
| <b>LFB</b>               | 5133057                      | ∅ 6 | M6 | 58 | 58 | 85  | 29 | 21 | 46 | ∅ 34 | 19 | 56 |
| <b>LGS - SLGS</b>        | 5133058                      | ∅ 8 | M6 | 64 | 64 | 95  | 32 | 24 | 50 | ∅ 40 | 22 | 63 |
| <b>P - SP - T</b>        | 5133059                      | ∅ 8 | M8 | 80 | 80 | 111 | 40 | 30 | 65 | ∅ 48 | 27 | 71 |

**PINZE ER  
ER COLLETS  
SPANNZANGE ER**


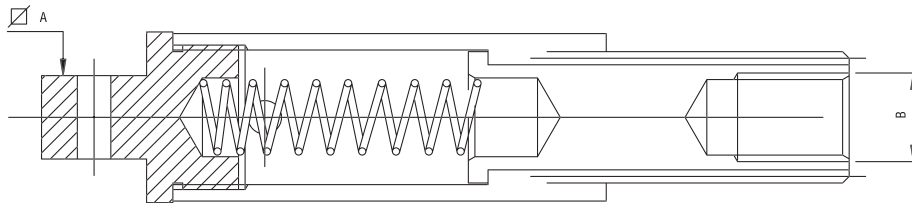
| Codice<br>Code<br>Bestellnr. | ∅ mm       | Materiale<br>Material<br>Werkstoff | Modello motore<br>Motor model<br>Motoremodell |
|------------------------------|------------|------------------------------------|---|
| <b>3824611.-</b>             | 1÷7 ER 11  | acciaio - steel - Stahl            | LCY - LFBH                                    |
| <b>3824616.-</b>             | 3÷10 ER 16 | acciaio - steel - Stahl            | LFB - LGS - SLGS - P                          |

**DADO STRINGIPINZA ER 11  
COLLET CLAMPING NUT ER 11  
SPANNMUTTER ER 11**


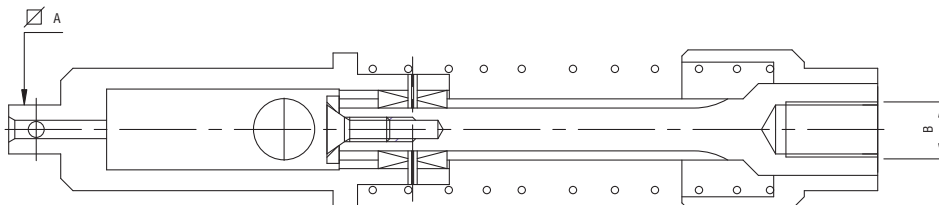
|                                   |         |
|-----------------------------------|---------|
| <b>Codice / Code / Bestellnr.</b> | 5100604 |
|-----------------------------------|---------|

**GRUPPI COMPENSAZIONE  
COMPENSATION UNITS  
AUSGLEICHSEINHEITEN**


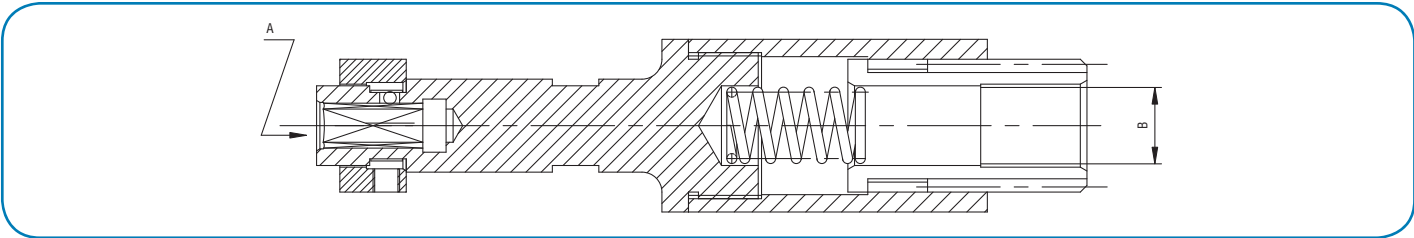
| Descrizione<br>Description<br>Beschreibung | Codice<br>Code<br>Bestellnr. | A    | B           |
|--|------------------------------|------|-------------|
| GR. ESTREMITÀ CORTA ATT. 3/8 UNF           | 7630018                      | 3/8" | 3/8"x24 UNF |
| GR. ESTREMITÀ CORTA ATT. 3/8 UNF Q. 1/2    | 7630018.1                    | 1/2" | 3/8"x24 UNF |
| GR. ESTREMITÀ CORTA ATT. 1/2 UNF           | 7630019                      | 1/2" | 1/2"x20 UNF |
| GR. ESTREMITÀ CORTA ATT. 1/2 UNF Q. 3/8    | 7630019.1                    | 3/8" | 1/2"x20 UNF |



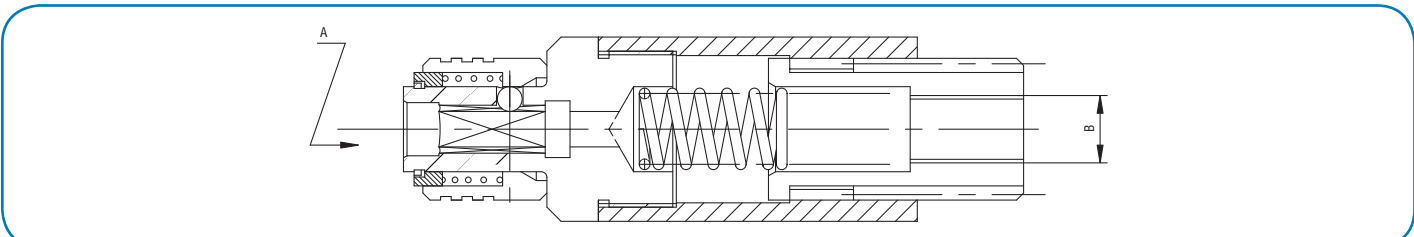
| Descrizione<br>Description<br>Beschreibung | Codice<br>Code<br>Bestellnr. | A    | B           |
|--|------------------------------|------|-------------|
| GR. ESTREMITÀ LUNGA 1/2-3/8 UNF            | 7630036                      | 1/2" | 1/2"x20 UNF |
| GR. ESTREMITÀ LUNGA ATT. 1/2 UNF Q. 3/8    | 7630047                      | 3/8" | 1/2"x20 UNF |



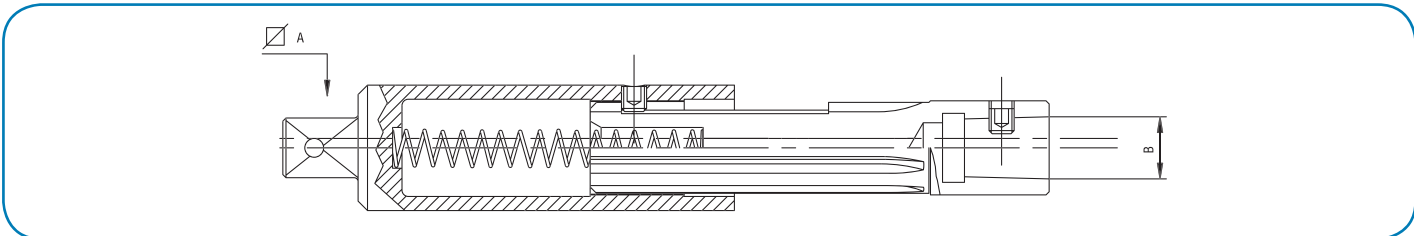
| Descrizione<br>Description<br>Beschreibung | Codice<br>Code<br>Bestellnr. | A    | B            |
|--|------------------------------|------|--------------|
| GR. ESTREMITÀ LUNGA ATT. 1/4 UNF           | 7630020                      | 1/4" | 3/8" x24 UNF |
| GR. ESTREMITÀ LUNGA ATT. 1/2 UNF           | 7630021                      | 1/2" | 1/2" x20 UNF |

**GRUPPI COMPENSAZIONE  
COMPENSATION UNITS  
AUSGLEICHSEINHEITEN**


| Descrizione<br>Description<br>Beschreibung | Codice<br>Code<br>Bestellnr. | A   | B           |
|--|------------------------------|---|-------------|
| <b>GR. ESTREMITÀ ALFB SCAN 3/8 UNF</b>     | 7630027                      | es. femm. - 1/4" hexagonal socket coupling - Innensechskant-Aufnahme 1/4" | 3/8"x24 UNF |
| <b>GR. ESTREMITÀ ALGS SCAN 1/2 UNF</b>     | 7630028                      | es. femm. - 1/4" hexagonal socket coupling - Innensechskant-Aufnahme 1/4" | 1/2"x20 UNF |



| Descrizione<br>Description<br>Beschreibung | Codice<br>Code<br>Bestellnr. | A   | B           |
|--|------------------------------|---|-------------|
| <b>GR. AGGANCI RAP. SCAN. 3/8 UNF</b>      | 7630029                      | es. femm. - 1/4" hexagonal socket coupling - Innensechskant-Aufnahme 1/4" | 3/8"x24 UNF |
| <b>GR. ESTREMITÀ 1/2X20 ES. 1/4 RAPIDO</b> | 7630032                      | es. femm. - 1/4" hexagonal socket coupling - Innensechskant-Aufnahme 1/4" | 1/2"x20 UNF |



| Descrizione<br>Description<br>Beschreibung | Codice<br>Code<br>Bestellnr. | A    | B    |
|--|------------------------------|------|------|
| <b>GR. ESTREMITÀ ATTACCO D.14 Q.1/2</b>    | 7630038                      | 1/2" | D.14 |
| <b>GR. ESTREMITÀ ATTACCO D.12 Q.1/2</b>    | 7630039                      | 1/2" | D.12 |
| <b>GR. ESTREMITÀ ATTACCO B10 Q.3/8</b>     | 7630040                      | 3/8" | B10  |

**OLIO SPECIFICO PER MOTORI PNEUMATICI**  
*OIL FOR PNEUMATIC MOTORS*  
*DRUCKLUFTMOTORENÖL*



|                            |         |
|----------------------------|---------|
| Codice / Code / Bestellnr. | 5989902 |
|----------------------------|---------|